

**CO2 Lasers**

**CNC Routers**

**Fibre Lasers**

**Fibre Markers**

**Press Brakes**

**Guillotines**

**CNC Plasma**

**Hydraulic Folders**

**Digital Cutting Tables**

# Product Catalogue

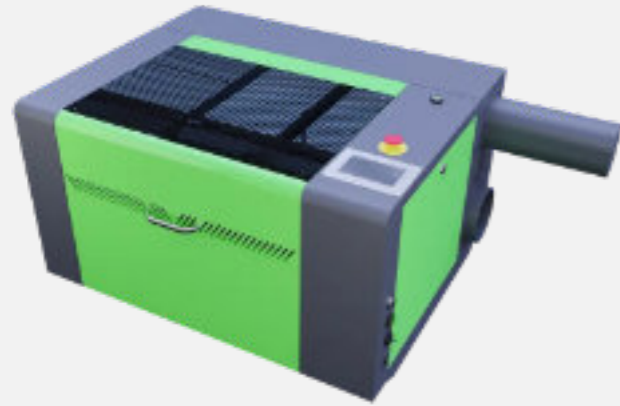


**UNIMACH s.r.o.**

**[www.unimach.sk](http://www.unimach.sk)**

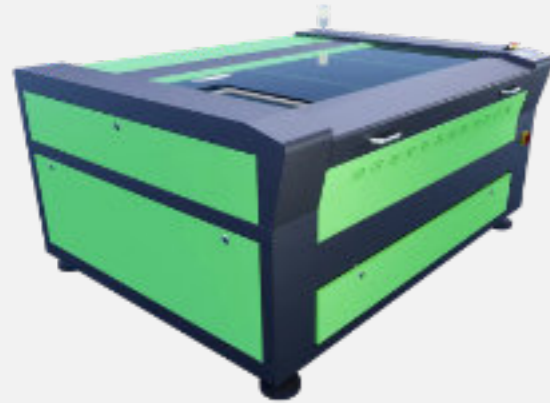
**+421 911715236**

## Desktop



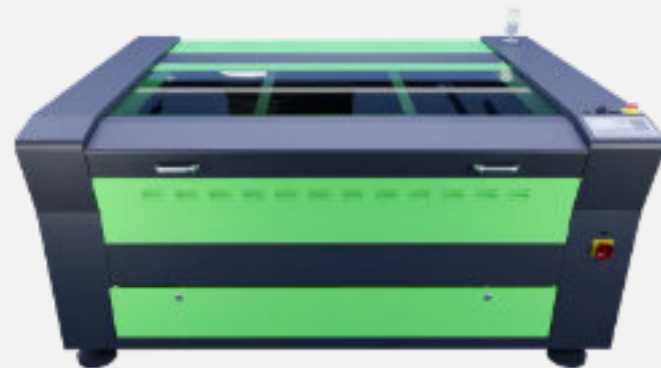
| General Specification | 500 x 300 mm bed size                                |
|-----------------------|--|
| Bed type              | Honeycomb  |
| Laser tube            | RECI 80W laser tube                                  |
| Motorised Z (up/down) | Yes  |
| Water chiller         | Genuine S&A chillers                                 |
| Air assist            | Yes  |
| Rotary device         | Supplied   |
| Safety glasses        | Yes  |
| Extraction system     | Yes - standard (upgrades to Purex or BOFA available) |
| Software package      | Lightburn  |
| Camera support        | Yes - Upgrade  |

## Pro Range



| General Specification      | Range of bed sizes                                   |
|----------------------------|--|
| Bed type                   | Honeycomb & low contact blades                       |
| Laser tube                 | RECI 80W laser tube (120W upgrade available)         |
| Motorised Z (up/down)      | Yes  |
| Water chiller              | Genuine S&A chillers                                 |
| Air assist                 | Yes  |
| Rotary device              | Supplied   |
| Safety glasses             | Yes  |
| Extraction system          | Yes - standard (upgrades to Purex or BOFA available) |
| Software package           | Lightburn  |
| Camera support             | Yes - Upgrade  |
| <b>Bed sizes available</b> | 400 x 600 mm, 600 x 900 mm, 1300 x 900 mm            |

## MCUT - Multi Material Cutting (Inc Thin Metal)



| General Specification | 1300 x 900 bed size  |
|-----------------------|--|
| Bed type              | Low contact blades   |
| Laser tube            | RECI 150W laser tube   |
| Motorised Z (up/down) | Yes  |
| Water chiller         | Genuine S&A chillers   |
| Air assist            | Yes  |
| Red dot pointer       | Yes  |
| Capacitance sensor    | Used for metal cutting only  |
| Safety glasses        | Yes  |
| Extraction system     | Yes - standard (upgrades to Purex or BOFA available)   |
| Software package      | Lightburn  |
| Camera support        | No   |
| Extra requirements    | You need a source of oxygen to utilise the metal cutting facility. The purchase of a filtration system is also required (must have a spark arrest module - please ask for details) |

## Large Format



| General Specification    | Range of bed sizes available  |
|--------------------------|---|
| Bed type                 | Low contact blade surface   |
| Laser tube               | RECI laser tube - 150W as standard  |
| Enclosure                | Yes- your LF series comes with a full enclosure to improve extraction and protect personnel |
| Motorised Z (up/down)    | <b>No</b>   |
| Zoned extraction modules | Yes - zoned extraction for better vapour removal  |
| Water chiller            | Genuine S&A chillers  |
| Air assist               | Yes   |
| Rotary device            | Supplied  |
| Safety glasses           | Yes   |
| Extraction system        | Yes - standard (upgrades to Purex or BOFA available)  |
| Software package         | Lightburn   |
| Camera support           | <b>No</b>   |
| <b>Bed sizes</b>         | 1300 x 2500 mm, 1500 x 2500 mm, 2000 x 3000 mm  |

## Full range of CO2 Laser Cutters.

Introducing our comprehensive range of CO2 Laser Cutters, engineered to meet diverse cutting and engraving needs across various industries. From compact desktop models perfect for small-scale operations and educational settings, to free-standing professional systems designed for businesses requiring high-throughput solutions, our selection offers unmatched versatility and precision. For those in need of large-scale, industrial capabilities, our large format CO2 Laser Cutters are crafted to handle even the most demanding applications with ease. Built with advanced technology and robust materials, all of our models guarantee exceptional performance, reliability, and ease-of-use, ensuring that you can tackle any project with confidence.

Perfect for a wide range of industries and such as makers, education, fabrication, sign making, model making, shop fitting and much more.

## Spartan CNC



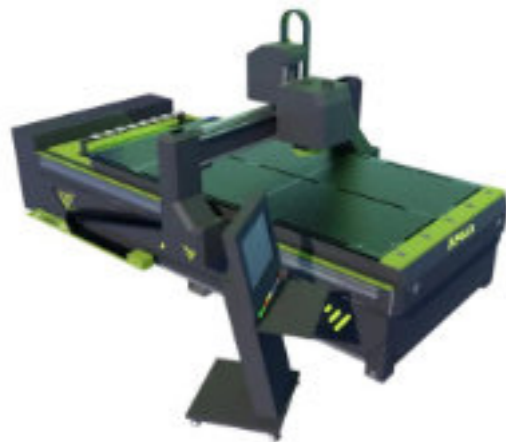
| General Specification | 1313 / 1325 / 1530 / 2030   |
|-----------------------|---|
| Spindle systems       | 2.2kW (water chilled) to 6kW (air cooled)   |
| Mechanical drive      | 6090 (Ball screw XYZ), 1313 and above (Ball screw Z, helical rack & pinion on XY) |
| Drive system          | High performance stepper drives   |
| Control system        | NK105 control with pendant  |
| Vacuum bed            | Yes matrix table with T-slot (6090 matrix only)                                   |
| Vacuum system         | Yes   |
| Extraction            | Yes (optional fine dust filter available)   |
| Software package      | Vectric V Carve Pro   |

## Falcon ATC



| General Specification | 1313 / 1325 / 1530 / 2030/ 2040                 |
|-----------------------|---|
| Spindle systems       | 9.0kW (air cooled) ER32 auto tool change system |
| Mechanical drive      | Ball screw Z, helical rack & pinion on XY       |
| Drive system          | High performance Delta servo drives             |
| Control system        | NK105 control with pendant                      |
| Vacuum bed            | Yes matrix table with T-slot (6090 matrix only) |
| Vacuum system         | Yes   |
| Extraction            | Yes (optional fine dust filter available)       |
| Software package      | Vectric V Carve Pro                             |

## Apollo M



| General Specification             | 1313 / 1325 / 1530 / 2030/ 2040   |
|-----------------------------------|---|
| Spindle systems                   | 7.5kW (air cooled) ER32 manual tool change system   |
| Mechanical drive                  | Ball screw Z, helical rack & pinion on XY   |
| Drive system                      | High performance Delta servo drives   |
| Control system                    | M-TECH in-house developed motion control that includes touch controlled PC based operation and wireless pendant and podium. |
| Material positioning stops/guides | Pneumatic pop-up end stops for material location  |
| Vacuum system                     | Yes - Multi zoned matrix bed with touch operated activation controls, including pump system/filter                          |
| Extraction                        | Yes (optional fine dust filter available)   |
| Software package                  | Vectric V Carve Pro and the M-TECH Controller   |

## Apollo ATC

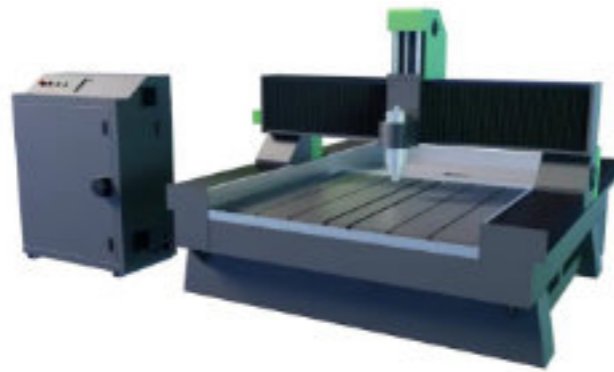


| General Specification             | 1313 / 1325 / 1530 / 2030/ 2040   |
|-----------------------------------|---|
| Spindle systems                   | 9.0kW (air cooled) ER32 Auto tool change system   |
| Mechanical drive                  | Ball screw Z, helical rack & pinion on XY   |
| Drive system                      | High performance Delta servo drives   |
| Control system                    | M-TECH in-house developed motion control that includes touch controlled PC based operation and wireless pendant and podium. |
| Material positioning stops/guides | Pneumatic pop-up end stops for material location  |
| Vacuum system                     | Yes - Multi zoned matrix bed with touch operated activation controls, including pump system/filter                          |
| Extraction                        | Yes (optional fine dust filter available)   |
| Software package                  | Vectric V Carve Pro and the M-TECH Controller   |

### Impressive range of industrial CNC Routers.

We are proud to present our versatile range of CNC Routers, encompassing the Spartan, Falcon, and Apollo brands, each tailored to serve distinct operational needs. The Spartan series is your entry-level solution, designed for newcomers and small businesses in need of reliable yet cost-effective CNC routing. Our Falcon brand takes the experience a step further, offering enhanced features and capabilities suitable for growing businesses seeking to scale their operations. For those who demand nothing but the best, the Apollo series delivers top-of-the-line performance, with a focus on high-speed processing and advanced material handling capabilities. Each brand within our CNC Router range is built to the highest quality standards, ensuring durability, reliability, and precise operation. Whether you're just starting out or are in need of an industrial-grade solution, our CNC Routers are designed to exceed your expectations.

## Stonetech CNC



| General Specification | 1313 / 1325 / 1530   |
|-----------------------|--|
| Spindle systems       | 6.0kW water cooled heavy duty spindle - with chiller             |
| Mechanical drive      | Helical rack and pinion on XY with reciprocating ball screw on Z |
| Drive system          | Rapid hybrid drive system  |
| Control system        | NK105 control with pendant (USB interface)                       |
| Tool cooling          | Integrated water cooling system for tooling                      |
| Cutting bed type      | T-slot clamping only   |
| Software package      | Vectric V Carve Pro  |

## Dual Bed Pendulum CNC



| General Specification             | Twin 1325 bed system  |
|-----------------------------------|---|
| Spindle systems                   | 9.0kW (air cooled) ER32 with dynamic under bridge auto tool change system |
| Mechanical drive                  | Ball screw Z, helical rack & pinion on XY                                 |
| Material positioning stops/guides | Pneumatic pop-up end stops for material location                          |
| Drive system                      | Rapid hybrid drive system   |
| Control system                    | Syntec multi axis control with wireless MPG control                       |
| Vacuum bed                        | Yes matrix table - twin bed system  |
| Vacuum system                     | Yes   |
| Extraction                        | Yes (optional fine dust filter available)                                 |
| Software package                  | Vectric V Carve Pro   |

## Apollo ATC - 4 Axis



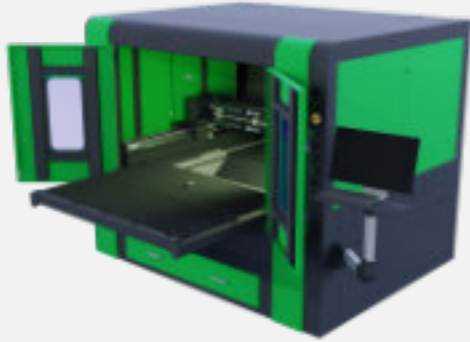
| General Specification             | 1313 / 1325 / 1530 / 2030/ 2040  |
|-----------------------------------|--|
| Spindle systems                   | 9.0kW (air cooled) ER32 Auto tool change system up to 24,000rpm with 8 tool change positions |
| Mechanical drive                  | Ball screw Z, helical rack & pinion on XY  |
| Drive system                      | High performance Yaskawa servo drives  |
| Control system                    | Syntec 4 Axis auto tool change CNC motion control  |
| Pod system                        | Pod and rail vacuum system included for 4 axis operations                                    |
| Material positioning stops/guides | Pneumatic pop-up end stops for material location   |
| Vacuum system                     | Yes - Multi zoned matrix bed including pump system/filter                                    |
| Extraction                        | Yes (optional fine dust filter available)  |
| Software package                  | Vectric V Carve Pro and the M-TECH Controller  |

## Specialist range of CNC Routers for industrial applications.

Introducing our Specialist CNC Router Range, designed to address unique and specialised routing needs across a broad spectrum of industries. Our Stone CNC Router is specifically engineered for the intricacies of stone carving and engraving, providing unparalleled precision and durability in challenging materials such as granite, marble, and limestone. For businesses seeking to maximise productivity without sacrificing accuracy, our Dual Bed Pendulum CNC Router features an innovative dual-bed design that allows for continuous operation; while one bed is in action, the other can be loaded or unloaded, effectively doubling your output. Lastly, the Apollo 4 Axis CNC Router stands as the pinnacle of our range, offering advanced 4-axis capabilities for complex and multi-dimensional applications.

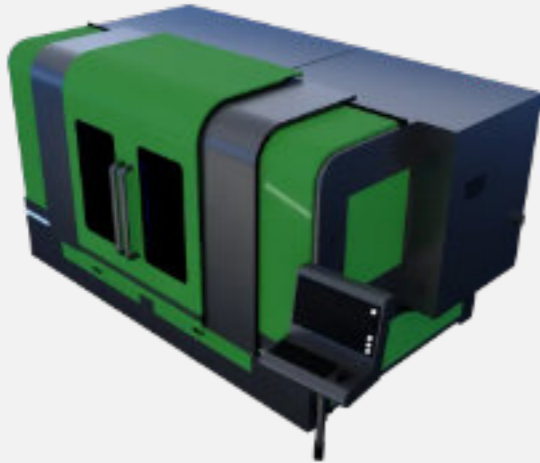
This series is equipped with cutting-edge technology to enable intricate carving, shaping, and milling operations with unparalleled precision. Each model in our Specialist CNC Router Range is constructed with high-grade materials and state-of-the-art technology to ensure consistent, high-quality results in every application.

## Titan T1



| General Specification | Bed size 1300 x 900 mm  |
|-----------------------|---|
| Full safety enclosure | Yes - included to protect operators and staff from any stray beams and to aid in the safe extraction of fumes |
| Laser source options  | 1kW 1.5kW 2kW   |
| Cutting head          | Raytools - Autofocus  |
| Servo motors          | Yes - Yaskawa   |
| Drive system          | Double Y axis ball screw  |
| Water Chiller         | Yes - S&A CWFL Series   |
| Extraction            | We recommend our Cyclone Extraction unit. Ask for details.  |
| Software package      | Cypcut laser cutting control  |

## Titan T2/T2 Plus



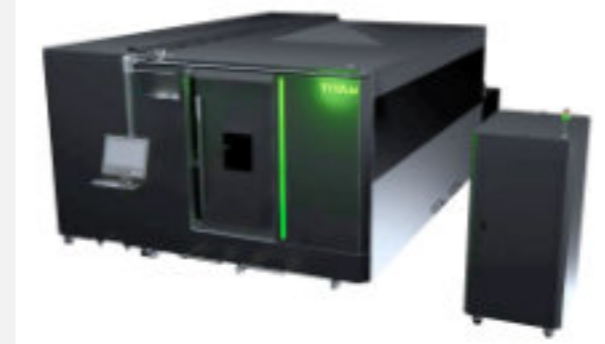
| General Specification | T2 (1260x2510 mm) T2 Plus (1500 x 3000 mm)  |
|-----------------------|---|
| Full safety enclosure | Yes - included to protect operators and staff from any stray beams and to aid in the safe extraction of fumes |
| Laser source options  | 1 - 4 kW source options   |
| CNC Control           | Cypcut with full touch screen operation   |
| Servo motors          | Yes - Yaskawa   |
| Cutting head          | Raytools - Autofocus  |
| Servo motors          | Yes - Yaskawa   |
| Water Chiller         | Yes - S&A CWFL Series   |
| Extraction            | We recommend our Cyclone Extraction unit. Ask for details.  |
| Software package      | Cypcut laser cutting control  |

## Titan T3 (including T4/6/8)



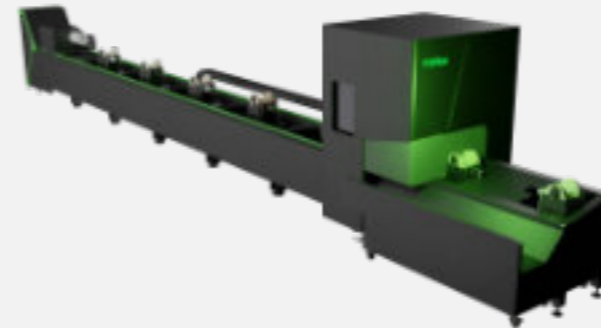
| General Specification  | Bed sizes (mm): 1500 x 3000, 2000 x 4000, 2000 x 6000, 2000 x 8000  |
|------------------------|---|
| Full safety enclosure  | Yes - included to protect operators and staff from any stray beams and to aid in the safe extraction of fumes |
| Laser source options   | 1 - 12 kW source options  |
| CNC Control            | Cypcut  |
| Shuttle exchange table | For maximum productivity  |
| Servo motors           | Yes - Yaskawa   |
| Cutting head           | Raytools - Autofocus  |
| Water Chiller          | Yes - S&A CWFL Series   |
| Extraction             | We recommend our Cyclone Extraction unit. Ask for details.  |
| Software package       | Cypcut laser cutting control  |

## Titan Combination Laser



| General Specification  | Bed sizes: 1500 X 3000 or 2000 x 4000 mm  |
|------------------------|---|
| Full safety enclosure  | Yes - included to protect operators and staff from any stray beams and to aid in the safe extraction of fumes |
| Laser source options   | 1 - 4 kW source options   |
| Rotary indexer         | Yes - up to 3000 mm in length   |
| CNC Control            | Cypcut  |
| Shuttle exchange table | For maximum productivity  |
| Servo motors           | Yes - Yaskawa   |
| Cutting head           | Raytools - Autofocus  |
| Water Chiller          | Yes - S&A CWFL Series   |
| Extraction             | We recommend our Cyclone Extraction unit. Ask for details.  |
| Software package       | Cypcut laser cutting control  |

## Titan Tube Laser



| General Specification | 6 or 8m Length Systems                                   |
|-----------------------|--|
| Laser source options  | 1.5 - 3kW power source options                           |
| Cutting head          | Raytools - autofocus                                     |
| CNC Control           | Cypcut   |
| Servo motors          | Yes - Yaskawa  |
| Water Chiller         | Yes - S&A CWFL Series                                    |
| Vacuum system         | Yes  |
| Extraction            | Yes (optional fine dust filter available)                |
| Software package      | TubePro laser Cutting (includes TubesT nesting software) |
| Safety                | Light guards and safety fencing                          |

### Accurate, powerful industrial metal cutting lasers.

We are excited to showcase our Titan Fibre Laser Cutter Range, a line of machines specifically developed to meet varying needs from prototyping to high-volume production. Starting with our compact Titan T1, this model is ideally suited for smaller workshops and educational institutions, providing a cost-effective yet high-quality introduction to laser cutting. For those requiring more advanced features and higher cutting powers, our Titan T2 range offers a suite of impressive options that deliver exceptional performance and efficiency.

Businesses with higher production requirements will find the Titan T3 (available in 4/6/8 kW configurations) to be a game-changer, engineered for optimal throughput without sacrificing precision. For specialised applications, we also offer a range of dedicated systems for tube cutting, as well as combination fibre lasers capable of handling both flat plate and tube materials. Each machine in our Titan Fibre Laser Cutter Range is built to industry-leading specifications, ensuring you achieve unparalleled accuracy, durability, and productivity in every project.

# Fibre Engraving

# Fibre Laser Engraving Systems

# Press Brakes

# Sheet Metal Bending Solutions

## FM30/50



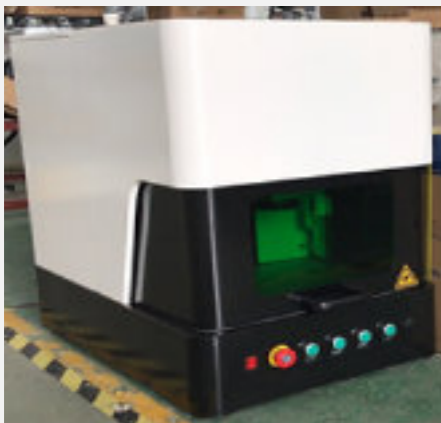
| General Specification |                            |
|-----------------------|----------------------------|
| Power options         | 30 or 50W                  |
| Laser type            | Galvo                      |
| Motorised Z           | Yes                        |
| Theta lens included   | 100 and 200 mm             |
| Max marking speed     | 7000 mm/s                  |
| Marking line width    | 0.01-0.1mm                 |
| Frequency             | 20-80khz                   |
| Foot pedal operation  | Included                   |
| Rotary unit           | Included                   |
| Software package      | Laptop included with EZCAD |

## XL



| General Specification |   |
|-----------------------|---|
| Power options         | 30W, 50W, 100W                                    |
| Laser type            | Galvo   |
| Motorised Z           | Yes   |
| Theta lens choice     | 100 mm (standard), 150 mm, 175 mm, 200 mm, 300 mm |
| Max marking speed     | 7000 mm/s   |
| Marking line width    | 0.01-0.1mm  |
| Frequency             | 20-80khz  |
| Air cooled system     | Yes   |
| Foot pedal operation  | Included  |
| Software package      | Laptop included with EZCAD                        |

## Dynamic 3D



| General Specification |                           |
|-----------------------|---------------------------|
| Power options         | 30W, 50W, 100W            |
| Laser type            | Feeltek 3D Galvo          |
| Motorised Z           | Yes                       |
| Theta lens choice     | 112 mm (standard), 234 mm |
| Max marking speed     | 7000 mm/s                 |
| Max marking depth     | 0.01-2mm                  |
| Marking line width    | 0.01-0.1mm                |
| Frequency             | 20-80khz                  |
| Air cooled system     | Yes                       |
| Foot pedal operation  | Included                  |
| Software package      | Laptop included Software  |

### Fast metal and hard plastic engraving.

Starting with our Standard units, these systems offer reliable and precise engraving solutions for everyday applications. For those in need of larger workspaces, our XL units provide an extended area without compromising on accuracy or quality.

Taking engraving to the next dimension, our specialised 3D units allow for intricate engraving on uneven or complex surfaces. Each model within this range is built with top-tier components, ensuring durability, efficiency, and unparalleled engraving quality.



## Premium Press Brakes

| General Specification | Full range of capacities available                              |
|-----------------------|---|
| Construction          | Steel welded mono-block, ensuring minimum deflection under load |
| Mechanical CAMS       | For setting the upper position and work speed change point      |
| Control System        | Delem DA-41T touch operated control                             |
| Motorised ram stroke  | Yes   |
| Adjustable Tooling    | Gooseneck top tool and multi-V bottom tool                      |
| Motorised back gauge  | Yes - including 2 off tiltable finger stops                     |
| Depth stops           | Yes - motorised   |
| Dwell time adjustment | Yes   |
| Front support arms    | Yes - 2 off front sheet support arms with tilting stops         |
| Foot pedal control    | Yes   |
| Service kit           | Included  |

### Affordable, easy to operate Press Brakes.

Our Premium Press Brakes also have their control panel conveniently placed on the right-hand side of the unit in immediate reach of the operator. It also comes with the following:

Key switch on-off, Delem DA-41T touch CNC Control for depth axis (angle programming), back gauge control, and hydraulics Rexroth/Hoerbiger valve system. Save up to 100 programs and up to 25 bends per program with the Delem DA-41 control. Control beam stop, back gauge, input angle and tool programming, retract all from the Delem DA-41 control system.

ManTech's range of Press Brakes comes in sizes from 1.5 m up to 5 m with weights of 40T to 400T.

# Guillotines

## Choose Mechanical or Hydraulic

# CNC Plasma Tables & Hydraulic Folders

# Heavy Duty Tables



### Mechanical



| General Specification |  |
|-----------------------|--|
| Size options (mm)     | 1270   2000   2550   3050  |
| Squaring arm          | Yes - 1000 mm with rule and flip up stops  |
| Support arms          | Yes - 1000 mm  |
| Side fences           | With opto-electrical guards  |
| Control               | E21S with programmable steps, stock counter, one side positioning and retract facility |
| Foot switch           | Yes - electric   |
| Other                 | Opto-electrical rear guards  |

### Hydraulic



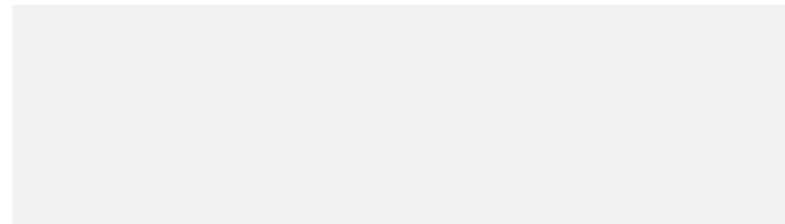
| General Specification                        |  |
|--|--|
| Size options                                 | 2000 x 4 or 6 mm   2500 x 6, 8, 10 or 12 mm   2550 x 3.2 mm   3050 x 3.2 mm  |
| Finger guard                                 | Yes - tiltable   |
| Blade clearance adjustment                   | Yes - rapid adjustment via a single handle on the side frame   |
| Cutting angle                                | Fixed  |
| Side and top fence guarding                  | Opto-electrical  |
| Hydraulic and electrical overload protection | Yes  |
| Control                                      | E21S programmable control with multi steps. Save up to 40 programs and 25 steps per programme, one key backup/restore. Holing, decompression time settings, stock counter, one side positioning retract facility |
| Foot switch                                  | Yes  |

### A workshop staple, available in either mechanical or hydraulic options.

Introducing our cost-effective range of Mechanical and Hydraulic Guillotines, designed to provide robust and reliable metal cutting solutions. Engineered with durability in mind, these systems come with easy-to-operate controls that ensure straightforward operation.

Whether you opt for the mechanical or hydraulic variants, you can expect a well-built machine that offers reliable performance for all your metal cutting needs. With affordability at the forefront, these guillotines provide an excellent balance of cost and capability, making them an ideal choice for businesses seeking efficient and dependable options.

### Phantom CNC Plasma Cutting Tables



| General Specification            | Full range of capacities available   |
|----------------------------------|--|
| Bed sizes (mm)                   | 1400 x 1400   1400 x 2600   1600 x 3100   2000 x 3000   2000 x 4000                                    |
| Mechanical drives                | Rack & pinion XY, dual drive Y axis, reciprocating ball screw Z  |
| Control System                   | M-TECH CNC motion control with USB interface, G-code command and PC podium                             |
| Drive system                     | Closed loop hybrid drivers   |
| Torch control                    | THC: Microstep digital torch height control/high speed arc voltage control                             |
| Software                         | Cut2D includes CAD/CAM package to import DWG, DXF, PDF and component nesting for material optimisation |
| Torch Options (Hypertherm)       |  |
| Hypertherm Powermax 45 amp       | Single phase 220-240v  |
| Hypertherm Powermax Sync 65 amp  | 3-phase 415v   |
| Hypertherm Powermax Sync 85 amp  | 3-phase 415v   |
| Hypertherm Powermax Sync 105 amp | 3-phase 415v   |
| Hypertherm Powermax Sync 125 amp | 3-phase 415v   |

### Compatible with a wide range of cutting torches such as Hypertherm.

Whether you're a small business looking for a versatile machine or an industrial operation with high-volume needs, our CNC Plasma Cutters are configured to meet your specific requirements, ensuring a seamless integration into your workflow. With our CNC Plasma Cutters, you'll achieve unparalleled speed, accuracy, and reliability, streamlining your operations for maximum productivity.

### Hydraulic Box & Pan Folders



| General Specification | Operating capacities of 4 mm                   |
|-----------------------|--|
| Size options (mm)     | 1270   2060   2550   3050                      |
| Clamping beam         | Hydraulic                                      |
| Folding beam          | Hydraulic                                      |
| Side fences           | With opto-electrical guards                    |
| Backstop              | Simple push-pull backstop with a 500 mm stroke |
| Beam operation        | Via switch/foot pedal                          |
| Segmented top tooling | Yes  |

### Easy to use hydraulic folding systems.

Reliable and easy to use hydraulic folding machinery - ideal for box and pan folding. A good cost effective alternative to a press brake.

## DCT range

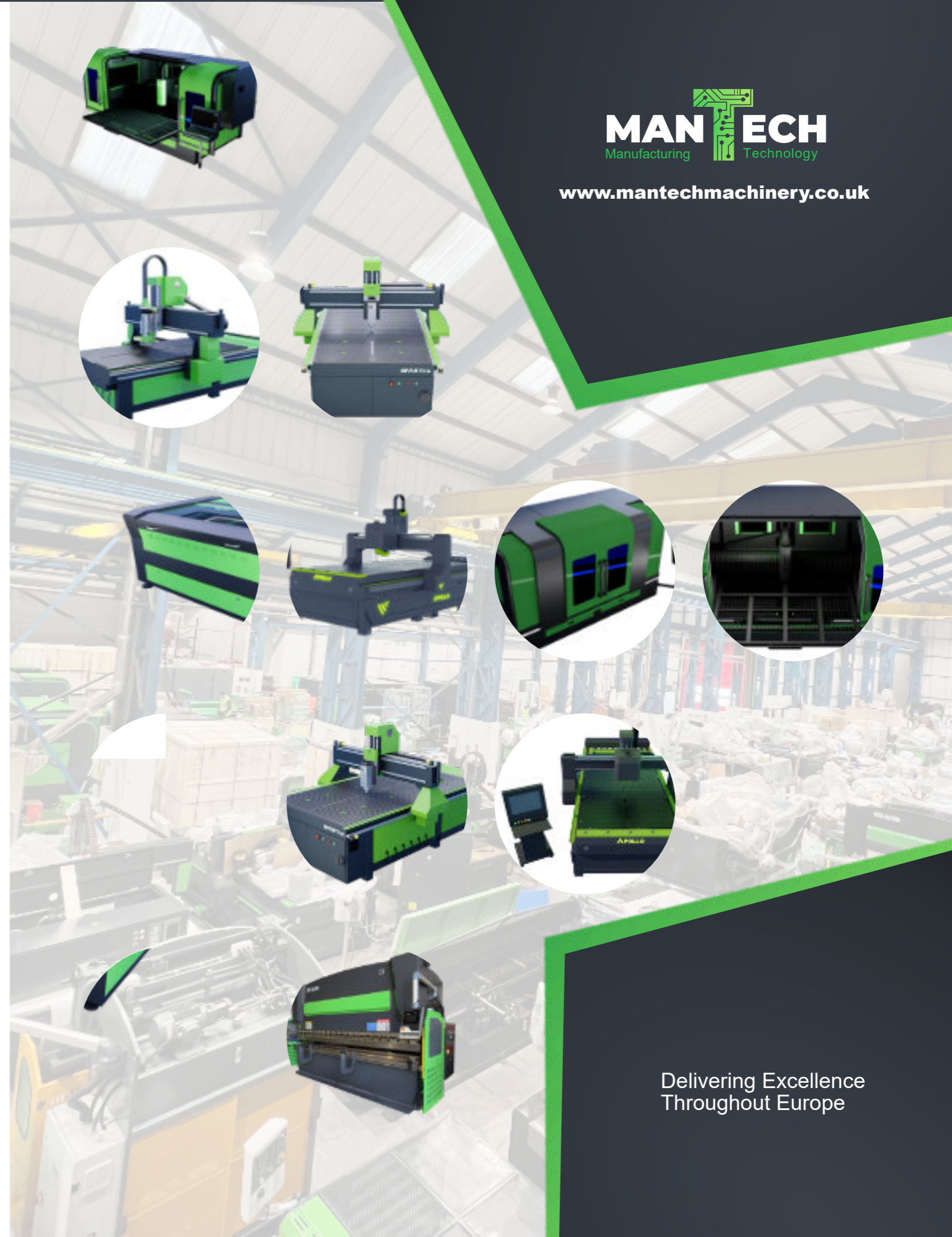


| Models   |  |   |
|--|--|---|
| BK03II   | CB03   | CB08  |
| Static bed with a single tool that's functional, high speed and affordable | Bigger brother to the BK series and complete with an auto feed bed | Higher capacities for larger production runs. |

|                              |   |
|------------------------------|---|
| <b>General Specification</b> | <b>BK03II range</b>   |
| Multi function tool head     | Oscillating cutting knife/kiss cut/LED cursor location  |
| Safety system                | Infrared sensors to prevent unsafe operation  |
| Moving speed                 | Up to 1200 mm/sec   |
| Cutting speed                | Up to 800 mm/sec  |
| Cutting thickness            | Up to 22 mm (material dependant)  |
| Cutting table type           | Static bed  |
| Vacuum bed                   | Yes   |
| Repeat accuracy              | ≤0.01mm   |
| Buffer memory                | 2Gb   |
| Transmission system          | Digital servo, straight rail synchronous belt   |
| Command system               | HP-GL compatible format   |
| <b>Size options</b>          | 1800 x 1600 (BK03II-1816), 2500 x 1600 (BK03II-2516RM)  |
| <b>General Specification</b> | <b>CB03II range</b>   |
| Multi function tool head     | Oscillating cutting knife/kiss cut/LED cursor location/creasing wheel/camera recognition (optional)/router engraver (optional)  |
| Safety system                | Infrared sensors to prevent unsafe operation  |
| Moving speed                 | Up to 1500 mm/sec   |
| Cutting speed                | Up to 1200 mm/sec   |
| Cutting thickness            | Up to 50 mm (material dependant)  |
| Cutting table type           | Auto feed bed   |
| Vacuum bed                   | Yes   |
| Repeat accuracy              | ≤0.01mm   |
| Buffer memory                | 2Gb   |
| Transmission system          | Digital servo, straight rail synchronous belt, guide screw  |
| Command system               | HP-GL compatible format   |
| <b>Size options</b>          | 2500 x 1300 (CB03II-2513RM), 2500 x 1600 (CB03II-2516RM), 1100 x 1300 (CB03II-1113), 1800 x 1600 (CB03II-1816RM)  |
| <b>General Specification</b> | <b>CB08II range</b>   |
| Multi function tool head     | Oscillating cutting knife/kiss cut/LED cursor location  |
| Safety system                | Infrared sensors to prevent unsafe operation  |
| Moving speed                 | Up to 1500 mm/sec   |
| Cutting speed                | Up to 1200 mm/sec   |
| Cutting thickness            | Up to 50 mm (material dependant)  |
| Cutting table type           | Auto feed bed bed   |
| Vacuum bed                   | Yes   |
| Repeat accuracy              | ≤0.01mm   |
| Buffer memory                | 2Gb   |
| Transmission system          | Digital servo, straight rail synchronous belt   |
| Command system               | HP-GL compatible format   |
| <b>Size options</b>          | 2500 x 1600 (CB08II-2516PM), 3500 x 1600 (CB08II-3516PM), 5500 x 1600 (CB08II-5516PM), 2500 x 2000 (CB08II-2520PM), 3500 x 3000 (CB08II-3520PM), 5500 x 2000 (CB08II-5520PM), 3000 x 3200 (CB08II-3032PM) |

## Large format, high speed digital cutting systems.

Perfect for a range of applications where speed is required, a versatile system that can process projects at speed with maximum efficiency and pin point accuracy.







[www.mantechmachinery.co.uk](http://www.mantechmachinery.co.uk)

#### Contact Details

**Mantech (U.K.) Ltd**

Heywood Wharf, Mucklow Hill, Halesowen, B62 8DJ

**Sales:** 0121 541 1444 | **Web:** [www.mantechmachinery.co.uk](http://www.mantechmachinery.co.uk)

**Email:** [sales@mantechmachinery.com](mailto:sales@mantechmachinery.com)